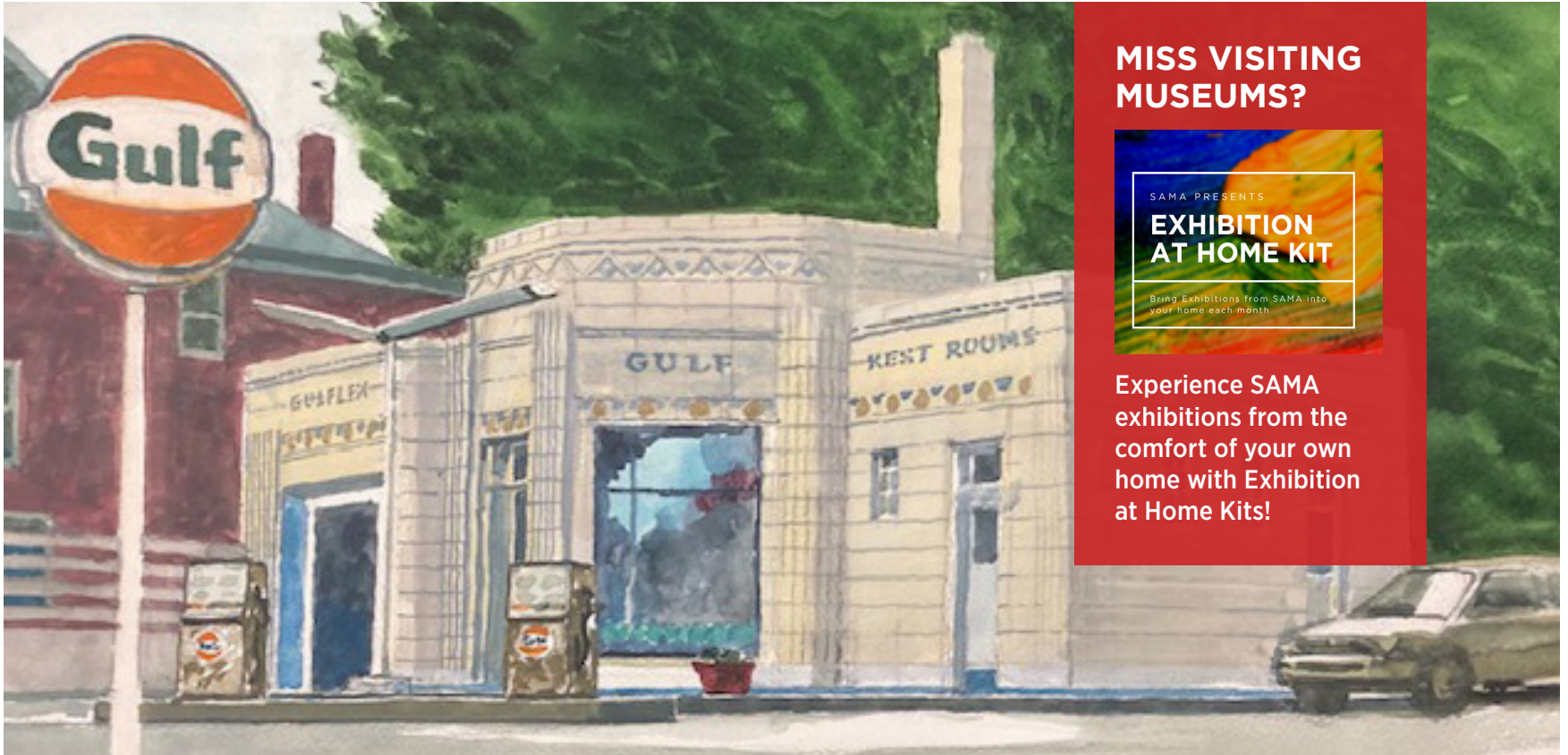


THE GALLERY

MARCH/APRIL 2021
ISSUE 58
sama-art.org



MISS VISITING MUSEUMS?



Experience SAMA exhibitions from the comfort of your own home with Exhibition at Home Kits!

Looking for That Moment Robert Bowden Exhibition

Through the use of watercolors, he paints exactly the world that he sees. Each composition is a tribute to the beauty that surrounds us every moment of every day. His appreciation for these details is evident and his skill communicates it effortlessly onto canvas. Robert Bowden graces his canvases with a deft eye for lifelike color and detail. The Southern Alleghenies Museum of Art in Bedford is pleased to announce its upcoming exhibition, *Looking for that Moment*, open February 6, 2021 through May 1, 2021.

Robert Bowden's exhibition displays a compendium of paintings that reveals his amazing talent. A long fixture in the Pittsburgh arts scene, Bowden is noted for his beautiful works. As a painter of urban subjects, his style is to capture the city-scape with intimacy. Bowden is attracted to a subject's color, shape, light effect and compositional potential. Bowden's illustrious career as a graphic designer, interwoven with his early interest in abstraction, has evolved into a successful evolution of realism using the *(cont. on page 5)*

Inside this issue



THE PREAKNESS GALA

BUY TICKETS OR BECOME A SPONSOR FOR THIS EVENT
MAY 15TH

Page 3



ARTISTS OF THE 21ST CENTURY

AT LIGONIER FEB 12 - APR 18
AT LORETTO FEB 5 - APR 3

Page 5



VIRTUAL ART CAMP

JOIN US THE SECOND SATURDAY OF EACH MONTH

Page 6

For the most up-to-date information on exhibit and event hours and operational changes, please visit each SAMA sites' facebook page.



FIND US ON FACEBOOK AND INSTAGRAM

PLAN YOUR VISIT TODAY!

THE YEAR AHEAD

by Sarah Henrich, Director and Senior Curator

2021 is filled with interesting exhibitions, the result from “mining” our permanent collection and looking at our holdings in a new and challenging manner. A refreshing review of the masterpieces from our collection is on view at Bedford, with engravings, paintings and lithographs by well-known artists covering two centuries of work. In addition to these favorites, Altoona is showcasing the fabulous photography and allied work of major contributors to the art and practice of photography—this continually evolving medium.

What is also important within the exhibition calendar each year is supporting the young and emerging artists living among us, carrying out their daily lives and discovering the joy and satisfaction of creative production. The Artists of the 21st Century exhibition is now on view at Loretto and Ligonier featuring the work of the area’s young artists. It is often that the program of art instruction is sacrificed when budgets are tight in the school districts, so it is especially important to encourage, view and recognize the offerings provided during these two exhibitions. Contemporary artists offer unique insights when queried on their selection of medium, subject matter and execution of their creation. Artists that are part of the annual and biennial exhibitions at SAMA have a wonderful

opportunity to collaborate, influence and urge their fellow artists onto new and even more incredible creative pieces, year after year. We may have interacted, viewed, or been moved by a work of art by an artist in any of these exhibitions. Some become our favorite contributor, or we discover a totally unknown new participant, never having been exhibited at SAMA’s annual opportunity. Whatever the nexus of our crossing, it is indeed a pleasure to take in the essence of that artistic expression—a new work—perhaps one which will become a part of our regional Pennsylvania art collection.

It is part of our mission to add selections by some of these artists to SAMA’s permanent collection.

In 2020, a work by Robert Bowden was added to the permanent collection, which reflects his artistic capability and his tools. Entitled, “Tools of the Trade” it captures his essence, both in subject and execution. In addition to “Tools,” Robert Bowden gifted a watercolor of the exterior of Ligonier, which was added to the collection as well. In 2021, a wonderful photorealistic piece from the Southwestern Pennsylvania Council on the Arts exhibition was selected for the permanent collection, “Sugar and Spice” by Pittsburgh Artist Robert Huckstein.



Robert Huckstein, *Sugar and Spice*

Certainly, one of the most exciting pieces to come to SAMA recently is “Scalp Level Forest Scene” c. 1870’s by George Hetzel of Pittsburgh. This gorgeous interior scene draws you into the cool, quiet, and brooding stillness of the forest in the Scalp Level area near Johnstown—a favorite of his school of artist friends. This landscape will be one of the featured pieces in the 2022 exhibition, “A Sojourn from Pittsburgh,” a collaborative exhibition sponsored by SAMA, The University of Pennsylvania Johnstown, and the Bedford Art Gallery.

SAMA is working toward amazing programs and exhibitions in 2021-2022. I hope you will join us on this journey, and enjoy the wonderful offerings mined from the permanent collection at SAMA.



George Hetzel, *Scalp Level Forest Scene*, c. 1870’s



Robert Bowden, *Tools of the Trade*

SAVE THE DATE

The Preakness Gala on May 15th

After the elation and admiration of last year's Derby Day Gala, this year our date and theme are based on the Preakness race on May 15th. The Preakness Gala promises to be so exciting and a grand, sophisticated, and entertaining evening. Once again, our Leadership Circle has planned a fabulous Gala program to include delicious cuisine, beverages, auctions, casino, art, and dancing. As with all of our Galas, we encourage our guests to take part in the premise, this year Preakness themed attire. The race will be viewed 'live' on a huge screen for all to enjoy.

We anticipate a record turnout for this distinctive event and are contacting you now to make

sure the Gala is on your calendar and to ask for your support. View a variety of ways to support the event as a sponsor, patron, or purchasing a ticket to attend using the QR code provided or visiting our website [loretto gala page](https://www.loretto.com/gala). As a Gala Patron, receive a full-page ad in the Gala program, a prominent listing on the invitation, special recognition at the Gala and coverage via SAMA's webpage and social media. Sponsorship is recognized in our program, on our website, at the venue, and in other advertising materials. Both opportunities are witness to our shared appreciation of creativity and artistic excellence and the crucial role they play in sustaining an inventive and energized community.



Live Music in Bedford

Come out to hear Irish tunes that are sure to get your hands clapping and toes tapping on Saturday, March 13, 2021 at the Saint Patrick's Day Live Music Event.

The event will be held at the Bedford County Historical Society's the Hall at Kinton's Knob. Cost to attend is \$75 per person. Doors open at 4:00 p.m. with Irish food and drink favorites like green beer. The band Across the Pond will perform a

variety of traditional Celtic music from 5:00 p.m. until 7:00 p.m., and the festivities continue until 8:00 p.m. Purchase tickets today on our [website event page!](#) Must be 21 or older to attend.

THE STAFF at SAMA

Sarah E. Henrich
Director and Senior Curator

Jessica Campbell
Education Coordinator
SAMA-Johnstown & Loretto
Site Coordinator

Sandra Hampton
Office Manager

Beverlie Hartnett
Registrar

Hannah Harley
SAMA-Altoona Site Coordinator

Erica Kilbride
Communications Coordinator

Kristin Miller
SAMA-Ligonier Valley
Education Coordinator and Site
Coordinator

Lee Rummel
Facilities Manager

Morgan Young
SAMA-Bedford Site Coordinator



Reservations are sold out through April! Subscribe to our [website home page](#) to receive our email updates and be the first to know when dates are added.

Thursday is Date Night

Everyone is trying to find a way to get out of the house but feel safe in their surroundings. People are finding both at SAMA Altoona.

At SAMA Altoona's Date Night at the Museum, guests have private access to the museum for the duration of their two-hour reservation. Dinner includes soup or salad, an entrée, dessert and wine with the following entrée options: pizza starting at \$60 per couple, pasta starting at \$120 per couple, or seafood starting at \$150 per couple. The party

could consist of up to 6 individuals. We take your order ahead of time so that dinner is ready and waiting upon arrival at 6:00 p.m. to enjoy a night among the artwork! Reservations are sold out through April, but new dates will be added monthly. Like SAMA Altoona's Facebook page [@SAMAAltoona](#) to keep updated on new dates!



Ligonier Valley will host its 5th annual Easter Egg Hunt on Saturday, March 27, 2021 at 1:00 p.m. (rain or shine). Children of all ages are encouraged to participate in the hunt for Easter eggs hidden throughout the Museum's gardens and lawn. The scouts of Scout Troop 372 will be lending a hand to hide eggs and help the hunters during the event. Our young guests can exchange their eggs for a wide variety of toys and treats, and we will also be offering fun art activities. All CDC health and COVID-19 social distancing guidelines will be in place. Gather your little bunnies and hop on over for an egg-citing Easter egg hunt at SAMA! Registration is encouraged but not required on our [event page](#) or by calling 724-238-6015. Thank you, Ligonier Scout Troop 372!

Exhibition at Home

Bring our exhibitions into your home each month by purchasing an Exhibition at Home Kit.



Each Exhibition at Home Kit includes ten 4x6 prints of artworks from a current SAMA exhibition. You will also receive supporting materials, such as a document explaining the exhibition, which includes art history information and bios about the artists, and art exercises for you to do at home. Support your local museum and enjoy the newest exhibition from SAMA in the comfort of your home! Kits are available for \$25 each or a

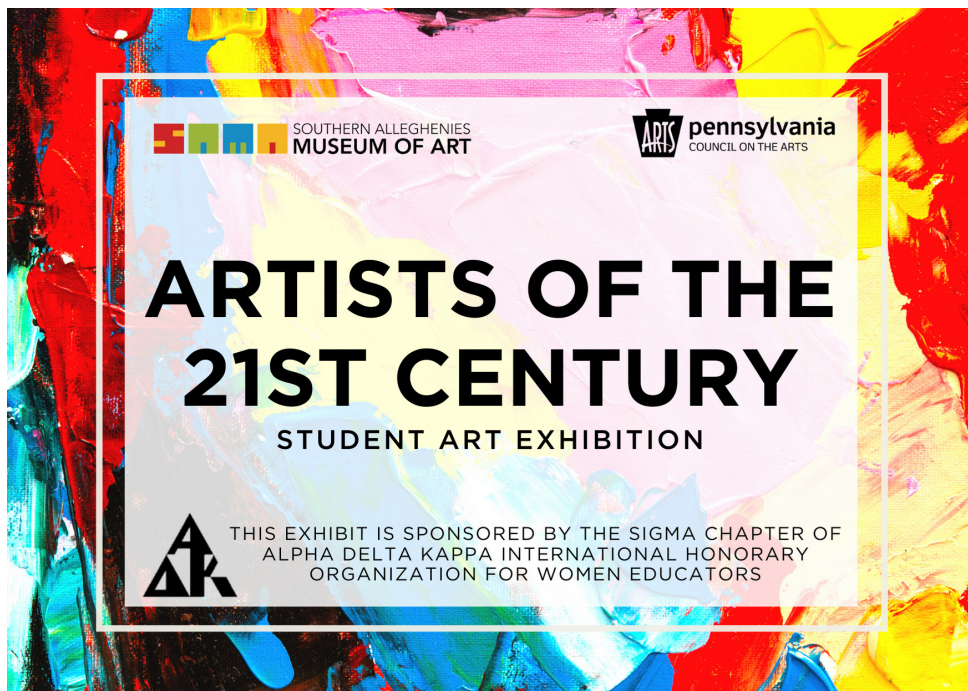
three-month subscription for \$60 and are mailed out on the first of every month.

March: A Glorious Tradition at Altoona

April: Robert Bowden at Bedford

May: Sommerfield/Joyner at Ligonier

Check back for additional kits to be added throughout the year! Purchase your kit today on our [website shop page!](#)



Looking for That Moment *(from page 1)*

challenging and unforgiving media of watercolor. Urban landscapes painted en plein air is the major theme in his paintings. Bowden has paintings in four museum permanent collections as well as in numerous corporate and private collections. He has also written four books and three exhibition catalogs of his work. *In Search of Beauty with a Brush*, a catalog of paintings in oil and watercolor by Robert Bowden and one-of-a-kind greeting cards with paintings of iconic Bedford locations will be available for purchase in the museum store or online on our website's [shop page](#).



WELCOME BACK

Artists of the 21st Century

at Ligonier February 12 - April 18
at Loretto February 5 - April 3

With the return of Artists of the 21st Century, the museum's twenty-third annual student art exhibition, SAMA will continue its tradition of celebrating the area's talented young artists. This exhibition will feature the area's student artwork. Student artwork will be displayed at SAMA Loretto from February 5, 2021 until April 3, 2021 and at SAMA Ligonier from February 12, 2021 until April 18, 2021. This exhibition is sponsored by the Sigma Chapter of Alpha Delta Kappa International Honorary Organization for Women Educators.

Schools exhibited at Loretto include Altoona Area School District, Bishop Guilfoyle Catholic High School, Saint Michael School, Blacklick Valley Junior and Senior High School, Cambria Heights Elementary School, Central Cambria School District, Forest Hills Junior-Senior High School, Greater Johnstown Elementary,

Penn Cambria Middle School, and Portage Area Elementary School. While schools featured at Ligonier Valley include Greensburg Central Catholic, Hempfield Area Senior High School, Maxwell Elementary, West Point Elementary, Fort Allen Elementary School, and Valley School of Ligonier.

Each district is permitted to submit up to 25 individual projects and two group projects. Held in conjunction with National Youth Art Month, the exhibition is open to schools that participate in SAMA's Arts-in-Education or Artist-in-Residence program. Through the programs, SAMA educators and professional artists travel to public and parochial schools to provide lessons designed to enhance students' understanding of art creation, technique, history, criticism, and aesthetics. SAMA's award-winning education initiative is the largest of its kind in the Commonwealth.

TWENTY-THIRD ANNUAL STUDENT ART EXHIBITION

Each museum will hold an opening reception to celebrate the exhibition and the region's student artists. The SAMA-Loretto reception will be held from 1:00 p.m. to 4:00 p.m. on Saturday, February 27th. SAMA-Ligonier Valley's reception is scheduled for 1:00 p.m. to 4:00 p.m. on Saturday, March 6th. The Museum suggests a donation of \$1 per person in support of the exhibition. Registration is encouraged but not required on our website [event list page](#).



REGISTER ONLINE

Zoom Virtual Art Camp
 2nd Saturday of the month: Feb - May
 11:00 a.m. - 11:45 a.m. ages 6-9
 12:30 p.m. - 1:45 p.m. ages 10-13

March 13th
 Portrait: Oil Pastels
 11:00 a.m. Ages 6-9: Lego Portraits
 12:30 p.m. Ages 10-13: Caricatures

April 10th
 Still Life: Watercolor
 11:00 a.m. Ages 6-9: Sweet Treats
 12:30 p.m. Ages 10-13: Fruits and Flowers

May 8th
 People's Choice: We'll vote as a class on a topic to end the series
 11:00 a.m. Ages 6-9
 12:30 p.m. Ages 10-13

Recordings of each week's demonstration will be available at the end of the camp on our SAMAonline [youtube page](#).

VIRTUAL ARTS IN EDUCATION

It's not too late to join us on the second Saturday of each month through May, as we extend our education program into your own home.

In this four-session virtual art camp, artist Amy Roadman will demonstrate various materials artists utilize to create art and learn how to use these supplies like a real artist! Join us to create a work of art the second Saturday of each month, February through May, while experimenting with different art materials each session. Make a chalk pastel landscape, an oil pastel portrait, and a watercolor still life. In the last session, we will vote on what subject matter and material from the provided kit to personalize your learning and experience.

This camp will enhance observation skills and the understanding of creating the illusion of space through placement, size, and overlapping of objects, atmospheric perspective, and the amount of texture and detail added to each work of art. The difference between sketching and drawing will be discussed and demonstrated throughout the process as

well as shading, layering, and color mixing. Each student will be given guidance but encouraged to express his or her own individuality.

Although you may have missed the Feb class, you will have access to the recording at the end of the art camp and receive the art supplies in your kit to complete last month's project. The classes take place the second Saturday of every month from February through May at 11:00 a.m. - 11:45 a.m. for children ages 6-9 and 12:30 p.m. - 1:45 p.m. for children ages 10-13. This course costs \$40, and it includes an art kit filled with the art supplies necessary to complete the projects every month. Kits can be picked up at any SAMA museum location. See our website [visit page](#) for addresses, and hours of operation. Registration is required at [sama-art.org/events-list](#). Participants may join using the Zoom link provided upon registration.

ARTIST IN RESIDENCE NOW EQUIPPED TO BROADCAST LIVE

Through the Pennsylvania Council on the Arts, Wolf-Kuhn Foundation, Community Foundation for the Alleghenies, Wal-Mart Foundation & an anonymous foundation, SAMA was able to purchase equipment for our learning centers that will be available in each museum. These centers will enable programming to go virtual using TVs, cameras, laptops and Zoom. Our arts education production will be almost fully virtual for

2020-2021.

We have twelve school-based residencies that will begin this spring and one healthcare residency that will be virtual. Teaching Artists have the availability to come to any SAMA location if they do not have the capabilities at home to host a virtual residency. We are so grateful for the funds necessary to continue our quality programming virtually.



It is so important to engage our constituents and schools through this pandemic, and now, we can continue to offer these opportunities for all to enjoy safely.

BOARD OF DIRECTORS

THANK YOU TO ALL
OUR SAMAZING
SUPPORTERS

Barry Newborn
President

Ann Benzel
Vice President

Nancy Devorris
Vice President of
Development

Larry Savino
Treasurer

Gerald Hawk
Secretary

Karen Azer
Mari-Pat Beene
Mary Borkow
Nicole Clark
George Conte
Hon. Timothy Creany
Fr. Richard Davis, TOR
John K. Duggan, Jr.
Glenda Forosisky
Stephen George
Jeanne Gleason, Emerita
Dede Kazmaier
Deborah Kimball
H. Dean Lemley
Joan McCreary, Emerita
Joan Mudge
Edward O'Brien
Michelle Passarello
Blair Pawlowski
Shirley Pechter, Emerita
Stephen Sloan
Michael M. Strueber,
Director Emeritus
Chantel Ventura
Mary Weidlein, Emerita
Gerald P. Wolf, Emeritus

IMPLICATIONS OF THE CAMERA

at Altoona Jan 4th - May 22nd

This exhibition dives into the history of photography and the influence and success of artwork reproducibility in the late 1900s and is sponsored by Mr. & Mrs. Michael Strueber. The reproducibility of artwork became fuel for artists such as Josef Albers, Andy Warhol, and Robert Rauschenburg, who all

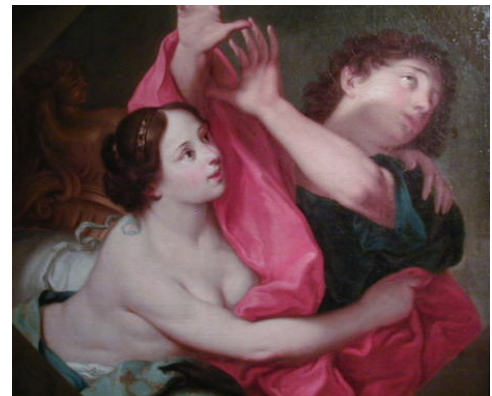


benefitted from fast and accurate methods of printing. This gallery embraces the replication processes by showcasing artworks from the museum's permanent collection from the artists listed here and others.

OLD MASTER PRINTS

at Bedford Jan 16th - Mar 27th

Major Works from the Permanent Collection and Old Master Prints is comprised of an excellent selection of artworks from the Museum's permanent collection. Major Works from the Permanent Collection and Old Master Prints blend in a beautiful arrangement in the Titelman Galleries. SAMA Bedford is excited to announce that the walls will be adorned with some of the World's most renowned and sought-after



Italian School (after Carlo Caignani), *Joseph and Potiphar's Wife*

artisans. Artists spanning centuries are brought together in an eclectic mix of the Masters. Superior skills are on display for everyone to appreciate.

A GLORIOUS TRADITION

at Altoona Mar 12th - June 18th

Painting has long been a romantic, nostalgic tradition steeped in the timeless beauty of the medium. It's been a tool to glorify individuals, visualize myths, and create legends. At its core, traditional painting is an ode to beauty. It is a constant celebration of life's visual pleasures and peculiarities. From portraits of significant figures to detailed still life paintings, viewers will encounter



reality translated through paint. This exhibition, on view from March 12th, 2021 through June 18th, 2021, honors the glorious tradition of painting. Pictured work by Alex Hess.



PO Box 9, Loretto, PA 15940

Return Service Requested

NON-PROFIT ORGANIZATION
U.S. POSTAGE
PAID
ALTOONA PA
PERMIT NO. 99



THE GALLERY is proudly sponsored by



BENZEL'S BRETZEL BAKERY, INC.

Altoona

1210 11th Avenue
Altoona, PA 16601
(814) 946-4464

Daily Hours:
Tuesday - Saturday:
12:00 PM - 4:30 PM

Bedford

137 E. Pitt St.
Bedford, PA 15522
(814) 589-3020

Daily Hours:
Tuesday - Saturday:
12:00 PM - 4:30 PM

Johnstown

450 Schoolhouse Road
Johnstown, PA 15904
(814) 269-7234

Closed due
to COVID-19.
Reopening TBD.

Ligonier

One Boucher Lane &
Route 711 South
Ligonier, PA 15658
(724) 238-6015

Daily Hours:
Tuesday - Saturday:
12:00 PM - 4:30 PM

Loretto

112 Franciscan Way
P.O. Box 9
Loretto, PA 15940
(814) 472-3920

Daily Hours:
Tuesday - Friday:
12:00 PM - 4:30 PM



/SAMAAltoona
/SAMABedford
/SAMAJohnstown
/SAMALigonier
/SAMALoretto



/SAMAAltoona
/SAMABedford
/SAMAJohnstown
/SAMALigonier
/SAMALoretto

sama-art.org