

Southern Alleghenies Museum Of Art
Saint Francis University Mall
P.O. Box 9
Loretto, Pennsylvania 15940

Return Service Requested

Non-Profit
Organization
U.S. Postage
PAID
Altoona, PA
Permit No. 99



ALTOONA — JOHNSTOWN — LIGONIER VALLEY — LORETTO

MARCH

- 5** Artists of the 21st Century opens (LOR)
- 6** Opening reception for Artists of the 21st Century (LOR); Robert E. Peary: Accomplished Arctic Explorer closes (LOR)
- 8** Blue Monday with Barry Wicks and Jimmy Mowery (ALT)
- 18** Lunch a l' Art with Bill Fletcher (LV)
- 19** Colleen Browning: Realist – Illusionist closes (JTN)
- 26** An American Landscape: Interpretations of the Artist opens (JTN)

APRIL

- 3** Steve Gilbert: Sign and Substance closes (ALT)
- 7** Lunch a l' Art with Ken Cotlar (ALT)

APRIL

- 9** Forbidden: Forever Cuba opens (ALT)
- 10** Artists of the 21st Century closes (LOR)
- 15** Lunch a l' Art with Elizabeth Courtney (LV)
- 17** Artists of the 21st Century closes (LV)
- 23** SAMA: 3D opens (LOR)
- 30** America's Spirit Revealed: Photographs by Skip Allen opens (LV)



THE SOUTHERN ALLEGHENIES MUSEUM OF ART NEWSLETTER

MARCH/APRIL 2010 - ISSUE V

DIRECTOR'S DESK ... WITH G. GARY MOYER

I remember a time, early in my career, when I was involved with trying to attract qualified individuals to come to work for a company located in a rural community. It was a very pleasant location and was often touted as "a great place to raise kids." Unfortunately, shopping, entertainment, cultural venues, and other services were not readily available and, in fact, required a 60 mile drive. The shortcomings noted here proved to be a major hurdle when it came to getting a commitment from a perspective applicant. It came to pass that the company, along with other area businesses, actually had to entice a mall developer into town and lead a movement to develop cultural programs for the community.



As a long-time area business manager, I am deeply committed to the communities in this region. From my business background, I understand how important it is for employees and their families to have things to do and see in the area where they live. From a business perspective, then, I think it is important this region develop and sustain its cultural resources.

From a macro view, it is interesting to note that last year (2008-2009), the Pennsylvania Council for the Arts (PCA) awarded over 1,500 grants to arts organizations across the state. State funding for these organizations has helped create over 36,000 full-time equivalent arts jobs as well as generating over \$1 billion in economic activity in the state. In this same vein, SAMA's annual operating budget tops one million dollars and we employ over 20 full- and part-time associates. In short, the arts represent an economic engine to the state and this region.

SAMA's four museums – Altoona, Johnstown, Ligonier Valley and Loretto – offer outstanding exhibitions and programs. SAMA is recognized as one of the state's best regional museums and our programs have become the model for museums across the country. SAMA's collection of American art features works by Peter S. Adams, Thomas Hart Benton, George Bellows, Colleen Browning, Mary Cassatt, Charles Catton, Jim Dine, Joseph Holston, Walt Kuhn, Thomas Moran, James Rosenquist, Donald M. Robinson, John Sloan, Ben Shahn, Thomas Sully, Robert Vickrey, Andy Warhol, and other acclaimed artists. Celebrated regional artists such as William D. Davis, Ron Donoughe, Thomas Hollobaugh, Kevin Kutz, Michael Strueber, and others also contribute to the collection. Naïve and ethnographic, Neo-classicism, Realism, Impressionism, Expressionism, Abstract, Fauvre, Cubism, Surrealism, American scene, Abstract Expressionism, Post-Modern, and Minimalism are well represented in a variety of media in the Museum's collection of nearly 4,000 works of art.

The SAMA museums attract over 70,000 visitors annually. Our award-winning educational programs, in partnership with the PCA, provide cultural experiences to over 25,000 students at schools in Blair, Cambria, Bedford, Fayette, Somerset and Westmoreland counties each year.

Businesses and other organizations looking to relocate or retain facilities in a specific geographic location consider the availability and accessibility of programs and services in that area. The people associated with these enterprises also weigh these resources in their employment decisions. Recruiting and retention are enhanced through the portfolio of activities that are available to the stakeholders. In short, does the area support the needs and interests of the business community and their constituents?

We are very fortunate to have a robust portfolio of museums and cultural experiences including the Altoona Symphony, Johnstown Symphony, Fort Ligonier, Altoona Railroaders Museum, Johnstown Flood Museum, Johnstown Heritage Discovery Center, and other venues available to the people of southwestern Pennsylvania. The Southern Alleghenies Museum of Art is proud to be included among the cultural treasures available in this region.

SAMA PROGRAM EASES PAIN

By Jeremy Barrick

Living with pain brought on by health care issues can be a great discomfort. But SAMA's Arts for Healing program may hold the key to alleviating some of those issues. Through the program, therapists and patients work directly with trained artists to construct meaningful works of art. By expressing their feelings in a creative manner, patients feel better emotionally. Additionally, studies have shown that repetitive movements of the fingers, hands and arms can help strengthen muscle joints in the upper extremities.

"I have had several participants talk to me about their severe pain," said Carol Yoder, L.P.N., an Arts for Healing classroom assistant with John P. Murtha Neuroscience and Pain Institute of Conemaugh Health System. "They tell me how Arts for Healing really helps them. I can really see this in their faces."

For the last six years, SAMA has offered the Arts for Healing residency program as part of its Arts-in-Education initiative. The program offers patients an opportunity to interact directly with artists in a patient/mentor relationship with mutual involvement in the creative process.

Tina Lehman, SAMA Education Administrator, said the program is one of the Museum's most important education initiatives. "Our Arts for Healing program, in partnership with the Conemaugh Health System, continues to be a great success," she said. "We've been working together since 2004 with the understanding that the arts affect how their patients deal with pain or illness. And when you see firsthand how much of an impact this program has had on the patients, it's really amazing. In a lot of ways, they come out of their shells, forget about their pain, and create fantastic works of art."

Nancy, a participant in the program, said, "What is it about painting that appeals to me? For me, painting is more than a simple act of applying paint to a surface. It unfolds in me the relief of pain, anxiety, abandonment and a great sadness which, as a result of possessing the human condition of imperfection, has left a permanent mark in me forever. I have chosen to discover the freedom and joy that comes from allowing me to reveal a vulnerable human being."



Arts for Healing residencies, like the one pictured with artist Martha Murphy, have eased pain in patients since 2004.

SAMA SITES

www.sama-art.org

ALTOONA
1210 11th Avenue
P.O. Box 3061
Altoona, PA 16601
Ph: (814) 946-4464
Fax: (814) 946-3131
altoona@sama-art.org

JOHNSTOWN
Pasquerilla Performing Arts Center
450 Schoolhouse Road
Johnstown, PA 15904
Ph: (814) 269-7234
Fax: (814) 269-7240
johnstown@sama-art.org

LIGONIER VALLEY
One Boucher Lane
Route 711 South
Ligonier, PA 15658
Ph: (724) 238-6015
Fax: (724) 238-6281
ligonier@sama-art.org

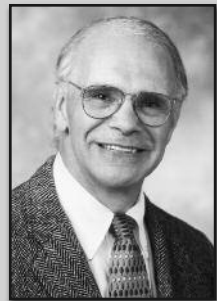
LORETTO
Saint Francis University Mall
P.O. Box 9
Loretto, PA 15940
Ph: (814) 472-3920
Fax: (814) 472-4131
loretto@sama-art.org

IN THE NEWS

- SAMA received an operations and exhibitions grant of \$15,000 from the Wolf-Kuhn Foundation. The Wolf-Kuhn Foundation has been a strong advocate for the arts in this region and we thank the Foundation for their continued support.
- The Museum received a donation in memory of Andy Moore of two paintings by Edwin Zoller from Mark and Barbara Hague. The works, titled 22-67: *Space* and 6-55, will be presented to SAMA's Acquisitions Committee for consideration at the March meeting.
- A rally for the arts in Harrisburg is now in the planning stages. Last year's arts rally attracted support from art groups across the state. We need to make certain that the arts have a voice in Pennsylvania. SAMA plans to initiate a "support the arts" petition beginning in the first quarter of 2010 and to deliver the message to our representatives involved in the budget process.

2010 GOC UNDERWAY

With SAMA's 2010 General Operating and Membership Campaign about to begin, the Museum appointed Dr. Paul Woolley and Cassandra Davies to serve as co-chairs for the annual drive. The co-chairs will work with Executive Director, G. Gary Moyer, to oversee the Campaign, through which funds are raised to help sustain operating costs for SAMA and keep its four museums open to the public free of charge.



"Despite challenging economic conditions, SAMA surpassed its GOC goal in both 2008 and 2009, and we hope to do so again in 2010," said Moyer. "A persistently down economy won't make it easy to achieve our goal of \$175,000 in 2010, but we are focused on the task at hand and driven to succeed. We are fortunate to have strong leadership at the helm in co-chairs Dr. Paul Woolley and Cassandra Davies. Given the commitment and passion of our many patrons, I am confident that we can secure their support and I look forward to accomplishing our goal once again this year."

This marks the third year on the GOC committee for Dr. Woolley. A SAMA board member since 2003, he is presently in private practice at Conemaugh Cancer Care Center at Conemaugh Memorial Medical Center. Dr. Woolley is the former director of UPCI @ UPMC Lee Regional Cancer Program and a former professor of clinical medicine at University of Pittsburgh Medical Center.



Davies, who joined SAMA's board in 2008, is new to the GOC committee. She has formerly served on the board of The Mercy Regional Health System Auxiliary, and has volunteered for the Blair County Arts Foundation and Easter Seals Central Pennsylvania. She is a former member of the Hollidaysburg Women's Club and has served on SAMA's Gala committee for more than 15 years.

SAMA ANNOUNCES GALA CHAIRS



Jane Gleason (left) and Renee Parowski

We may still be mired in snow and slush, but SAMA is already looking ahead to the summer. The Museum recently announced Jane Gleason of Johnstown and Renee Parowski of Altoona will serve as co-chairs for the Museum's 32nd annual summer Gala, scheduled for Saturday, July 10. Gleason has been a member of the Gala steering committee since 2008. She is a board member of the American Cancer Society's Cambria/Somerset Branch, and served as the chair of its Pink Ribbon Ball in 2008 and 2009. Gleason, Vice President of Gleason Inc. and a councilwoman for Westmont Borough, said she looks forward to working on the 2010 Gala. "As has been tradition, the Gala will be a wonderful evening filled with great food, music and auction items. This year's event will not disappoint. We hope to see our patrons, friends and loyal Gala supporters, as well as share the SAMA Gala experience with those new to the event."

Parowski, owner/operator of Pam's Chargers School of Baton, joins the Gala committee after working for four years with SAMA-Altoona's *The Art of Style and Fashion*. Although she hasn't been involved with the Gala for several years, Parowski said she is looking forward to working on the Museum's largest fundraiser. "I am so excited and thrilled to be given this opportunity, and I am looking forward to working closely with my co-chair, Jane, the SAMA staff, and the entire steering committee. We have many new and exciting ideas that are sure to make this truly a wonderful event."

GARDEN PARTY CHAIRS PREPARE FOR BIG EVENT



Peggy Shepler (left) and Barbara Kravits

SAMA-Ligonier Valley is gearing up for its ninth annual Garden Party, and is doing so with the help of co-chairs Barbara Kravits and Peggy Shepler, both of Ligonier. The two, along with Museum Coordinator Sommer Toffle and her staff, are hoping to make this year's event, scheduled for June 5, one of the most memorable to date. The duo are planning a black and white theme, titled "A Picture is Worth a Thousand Words," to coincide with the Museum's scheduled exhibition of Skip Allen's photography.

"I am looking forward to working with Peggy Shepler, Sommer Toffle and the SAMA staff, the local community, and especially all the members of the auxiliary to raise funds for our Museum, a treasure of the Laurel Highlands," said Kravits. Since moving to Ligonier five years ago, Kravits has been an active participant in many local and regional organizations including Fallingwater, Lincoln Highway Heritage Corridor, Ligonier Valley Historical Society, Ligonier Valley Library, Touchstone Center for Crafts, and the SAMA-Ligonier Valley Auxiliary.

Shepler also has deep ties to the Ligonier community. She has been actively involved with the Fort Ligonier Days Parade for many years, and as a former elected official served on Ligonier Borough Council for eight years. She currently serves on the board of directors of Chestnut Ridge Historical Society and is involved with Ligonier Valley Railroad Association and Ligonier Valley Library. "I am very excited to be more involved in this year's Garden Party," she said. "I am eagerly looking forward to working with co-chair Barbara Kravits; Sommer, Chris and Terry at SAMA-Ligonier Valley; and the auxiliary to make this year's Garden Party another successful evening."

MEET AND GREET...JESSICA CAMPBELL

Jessica Campbell learned in high school about the importance of the arts, and now she will be in charge of ensuring that thousands of students throughout central and western Pennsylvania have the opportunity to learn that same lesson. In January, Jessica was appointed the Museum's Education Coordinator and will be responsible for overseeing SAMA's Arts-in-Education and Artist-in-Residence programs. These programs reach tens of thousands of students at nearly 100 schools, providing children with exposure to the fine arts and opportunities to work side-by-side with professional artists.

Jessica credits her high school art teacher, Glenn Kerr at Cambria Heights High School, with fostering her passion for the arts. That experience led her to pursue the arts at Seton Hill University, where she graduated with a B.A. in 3-D media. During those years, she developed a strong arts background by working at the school's Harlan Gallery.

Although Jessica is new to the position, she's a familiar face around SAMA, having been involved with the Museum for more than five years. After completing an internship at SAMA-Altoona, she was hired as the receptionist for the Altoona Museum. She was soon promoted to Administrative Assistant at the Loretto Museum, where she organized events and worked closely with the summer Gala. She also worked briefly with the education department two years ago when she worked as an art educator, taking works from the Museum's permanent collection into the schools for Arts-in-Education presentations. As Education Coordinator, she will work out of both the Ligonier Valley and Loretto museums.

Jessica said she looks forward to the challenges of her new position and hopes her work helps keep the arts a vital part of the region's public and private schools. "The arts are such an important part of our lives, and keeping art programs in the schools not only allow children to learn about the arts from a historical point of view, but also helps them grow their creativity," she said. "I am looking forward to sharing our amazing programs with our surrounding communities, and I'm excited to be working with our participating schools, teachers and artists on new and fascinating projects."



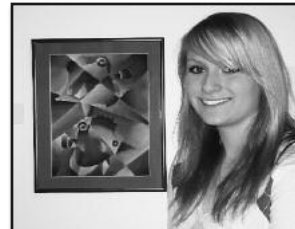
SAMA EXHIBITIONS CELEBRATE STUDENT ARTISTS

Every March, SAMA celebrates National Youth Art Month and the state Arts-in-Education Month with its *Artists of the 21st Century* student art exhibitions. With exhibitions at its Loretto and Ligonier Valley facilities, nearly 300 student-created works will be on display. This year's exhibitions are in honor of the late Congressman John Murtha, who had been a staunch supporter of the arts and SAMA.

According to SAMA Education Administrator Tina Lehman, the *Artists of the 21st Century* exhibition, now in its 12th year, provides a special opportunity for children to see their work professionally hung in a museum, along with full text panels. "Over the years, this exhibition has proven to be a great opportunity for students to showcase their creativity and talent. These kids create some amazing art every year, and it's wonderful that we have a way to acknowledge them and their incredible talent. It's also a great chance for the public to come out and encourage our students' artistic endeavors, while also supporting the arts and ensuring its future in our region."

This year's dual exhibitions feature works from students in 36 schools spanning 16 school districts. Bedford, Blair, Cambria, Indiana and Somerset county schools are represented at the Loretto Museum, while SAMA-Ligonier Valley features works from students in Fayette and Westmoreland counties. The exhibition is open to schools that have participated in SAMA's Museum/School Partnership Program, through which SAMA educators travel to public and parochial schools to provide Arts-in-Education programs designed to enhance students' understanding of art creation, technique, history, criticism and aesthetics. The award-winning program is the largest of its kind in the Commonwealth.

Artists of the 21st Century is on view at SAMA-Loretto from March 5 through April 10, and at SAMA-Ligonier Valley from February 26 through April 17.



One of the 2009 student artists

BUDGET CUTS LEAVE ART EDUCATION IN JEOPARDY

By Jeremy Barrick

In the wake of the new Pennsylvania budget, statewide arts organizations are left scrambling on how to make ends meet. The budget, passed October 9, has significantly reduced funding for the arts throughout the Commonwealth. SAMA and other organizations are now faced with offering quality programming while burdened with having fewer resources at its disposal.

"SAMA's state funding was cut by around 20%," said Tina Lehman, SAMA Education Administrator. "We had to postpone nearly all of our requested artist residencies until spring 2010. We're still on track to complete all the residencies, and hopefully we will not have to worry about this happening again next school year."

SAMA is one of 12 members in the Arts-in-Education (AIE) Partnership of the Pennsylvania Council on the Arts (PCA). The AIE Partnership places practicing, professional artists in residence in schools and community settings. The residencies foster educational growth and an interest in the arts by having students interact directly with the artists. Each AIE partner is charged with providing educational services, through the PCA, to a specified region. SAMA's service region spans Bedford, Blair, Cambria, Fayette, Somerset and Westmoreland counties.

"SAMA's education programs serviced over 25,000 students in 31 school districts at nearly 100 schools last year," said G. Gary Moyer, SAMA Executive Director. "In a number of cases, these programs were the only exposure to art in the classroom. Remember, studies show strong cross-curricular evidence that art can bolster academic performance in other courses."

The impact of the budget crunch is being felt throughout the state. Holly Nowak, Manager for ArtsErie, an AIE partner that serves 11 counties throughout Northwestern Pennsylvania, said the organization's operating fund and residency money has been cut by 25%. One staff position was eliminated, and there is now less money to support their artist-in-residence program. "It is a difficult road ahead, but we have to take it one step at a time," said Nowak.

Another AIE partner, ArtsPath, which serves Indiana County, has felt a strain created by the decreased budget. "Residency requests are significantly lower, as schools and communities simply didn't know if we would have funds to match their requests," said Jeff Wacker, ArtsPath Assistant Director. Wacker said it now may be problematic to find schools interested in hosting residencies that also have available funds. ArtsPath also was forced to cut hours from two positions. "While we are certainly grateful that the legislature funded the Pennsylvania Council on the Arts and, by extension, ArtsPath, the responsibilities and work of the program have remained the same and there are now fewer hours with which to accomplish them," he said.

Support and funding for the arts is as important today as it has ever been. If you recognize the importance of the arts in our schools, and support the mission of SAMA and other AIE partners, please call your legislator to tell them you believe in the importance of including funding for the PCA, and the arts, in the state budget. To find your representative's phone number, please visit www.legis.state.pa.us.



Artist residencies like this one with Tom McCarty could be in jeopardy due to cuts in funding.