



David Hamaker, *The North Star Laundry*, 2006

Alyce Ritti (Port Matilda)
Everyone's Theatre, 2007
Mixed media collage, 8" x 10"

My Theatre, 2007
Mixed media collage, 8" x 10"

Michael Rowe (Camp Hill)
Beatle Mania - 172 Beatles Songs, 2008
Oil on linen, 30" x 30"

Birdwatchers Paradise, 2001
Oil on linen, 60" x 60"

The Sayings Drawing, 1998
Graphite on paper, 27 1/2" x 38 1/2"

N. Sarangoulis (Reading)
Landscape, from Recycled Painting Series, 2005
Gouache on found object, 25" x 35"

Renoir Draws a Blanc, from Recycled Painting Series, 2005
Oil and collage on found object, 7" x 12"

Anna Schnur (Somerset)
Cadence, 2006
Acrylic and ink on canvas, 36" x 60"

Winter Music, 2006
Acrylic and ink on canvas, 36" x 60"

Susan Schwarz (Sarver)
Myers Pickle Farm, 2008
Watercolor collage and paper on paper, 23" x 30"

Susan Severson (Altoona)
Haven, 2007
Oil on canvas, 24" x 36"

Retreat, 2007
Oil on canvas, 24" x 30"

Jeanne Stevens-Sollman (Bellefonte)
Lying in the Redd, 2008
Polychrome clay, 12 1/2" x 20" x 11 1/2"

The Delinquents, A Study for Raccoons, 2007
Polychrome clay, 12 1/2" x 16" x 30"

George M. Turner, Jr. (Central City)
Encapsulation of the Spiral Sequence Spheres, Prototype 1, 2007
Steel, bronze, and concrete, 19" x 13" x 13"

Vertical Rings Fibonacci Analysis, Prototype 1, 2008
Steel, concrete, and plaster, 19" x 13" x 13"

Scott A. Turri (Pittsburgh)
Poppies + Heroines 75-8, 2007
Acrylic on canvas, 45" x 75"

Georgette L. Veeder (Adamstown)
Elusion, 2006
Cast handmade paper, pigmented pulp, and acrylic, 36" x 72" x 4"

Mary Vollero (Bellefonte)
Yellow Truck, 2008
Giclée print, 16" x 20"

Ralph Welsh III (Somerset)
Jack and Helen Thorne's Backyard #10, 2008
Pastel on paper, 18" x 24"

Perry Winkler (Penfield)
9 a.m., 2007
Watercolor on paper, 20" x 30"

Valentine's Day, 2007
Watercolor on paper, 22" x 30"

Veronica Winters (State College)
Summer Melody in Blue, 2007
Colored pencil on paper, 24" x 18"

Judith Zimmerman (Pittsburgh)
Russian Landscape - Cleared Land, 2008
Digital print, 16" x 20"

DIRECTOR'S STATEMENT

The Southern Alleghenies Museum of Art mounts exhibitions that are designed to provide our constituents with a memorable cultural experience. These exhibitions generate interest, evoke emotion and develop appreciation for the arts. The Museum's exhibitions have included an array of artists including Thomas Hart Benton, Colleen Browning, Alexander Calder, Mary Cassatt, Norman Rockwell, Thomas Sully, Andy Warhol, other renowned artists and many noteworthy regional artists.

The Southern Alleghenies Museum of Art's Biennial is a celebration of the artistic talent that flourishes in this region. The Museum is proud to host *Biennial 2008* as a showcase for the work of artists from throughout the Commonwealth of Pennsylvania. The Biennial provides Pennsylvania's professional artists with a recognized and prestigious venue. This exhibition speaks to the unbounded inspiration, creative ability and artistic expression of Pennsylvania's artists today.

This is the Museum's fourth Biennial program. This year's recipient of the Merit Award for *Best of Show*, the most prestigious award offered by the Museum, is presented to Scott A. Turri for his work, *Poppies + Heroines 75-8*. In addition, we are pleased to offer awards of merit in the categories of painting, drawing, photography, sculpture and crafts.

My sincere appreciation is extended to all of the individuals who worked to make *Biennial 2008* a memorable program for the participating artists and a signature event of the Southern Alleghenies Museum of Art. I offer a special thank you to John Vanco, Director of Erie Art Museum, who served as selection juror and whose dedication to task, attention to detail, and respect for the artists contributed immeasurably to the Biennial's success. Barbara Jones, Curator of the Westmoreland Museum of American Art, served admirably as awards juror and was faced with the daunting task of selecting a winner from a deep pool of talent. Interim Curator and Collections Manager, Bobby Moore, deserves recognition for her efforts to bring *Biennial 2008* to fruition. I also recognize an active and involved community whose continued support is critical to the Museum's future. Finally, I thank the Director's Circle, Museum Associates, Education Sponsors, Exhibition Sponsors, and other donors who give generously to help make our work at Southern Alleghenies Museum of Art possible.

G. Gary Moyer
Executive Director

Director's Circle

Mr. and Mrs. William Benzel
Conemaugh Memorial Medical Center
Franciscan Friars, T.O.R.
Mr. and Mrs. C. Wesley Lingenfelter
Mr. and Mrs. Harry McCreary
Mr. and Mrs. Edgar Dean Nelson
Mr. and Mrs. Donald Robinson

Museum Associate

Mrs. Mary Weidlein

Education Sponsors

C & G Savings Bank
Cleveland H. Dodge Foundation
Gleason Agency
Pennsylvania Council on the Arts
Thoburn Foundation
Mr. and Mrs. Joseph Ventura
Robert S. Waters Charitable Trust
Wolf-Kuhn Foundation

Exhibition Sponsors

Ralph J. Albarano & Sons, Inc.
Dr. and Mrs. Magdi Azer
Dr. and Mrs. Joel Borkow
Hon. Timothy and Dr. Anne Creany
Mr. and Mrs. Donald Devorris
M & T Bank
North American Communications
Mrs. Fred A. Pechter
Mickey and Neil Port
Rev. Sean M. Sullivan, T.O.R.
Mr. and Mrs. Gerald P. Wolf

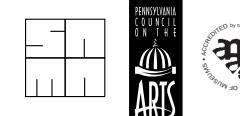
Editors: Travis Mearns and Bobby Moore
Printer: Laurel Valley Graphics
Catalogue Design: Color Scan

© 2008 Southern Alleghenies Museum of Art

This catalogue is published by the
Southern Alleghenies Museum of Art
Post Office Box 9
Loretto, PA 15940
(814) 472-3920

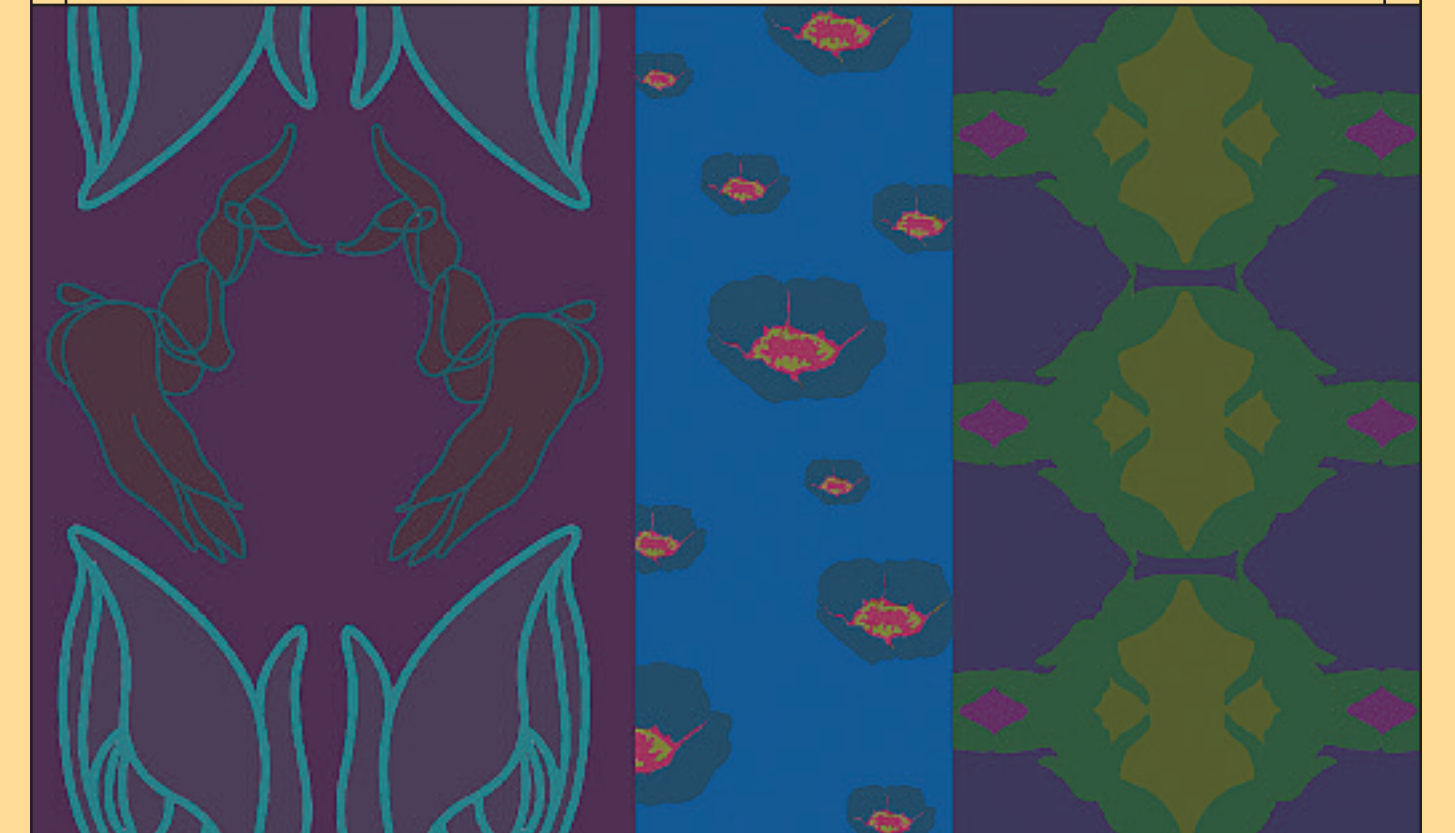
Hours:
Tuesday through Friday: 10 a.m. to 5 p.m.
Saturday: 1 p.m. to 5 p.m.
Closed Sundays and Mondays
Admission is free

Cover: Scott A. Turri
Poppies + Heroines 75-8, 2007
Best of Show



Ceres M. Rangos, *Miss Fanny in Her Sunday Finest*, 2008

BIENNIAL 2008



Southern Alleghenies Museum of Art
Loretto, Pennsylvania

November 7, 2008 - February 7, 2009

CATALOGUE



William T. Perry, *Winter Look*, 2007

SELECTION JUROR'S STATEMENT

It was a pleasure to immerse myself in the overflowing creativity of the artists who have submitted works to the *Biennial*. It was a thrill to see the combination of new ideas and well-crafted renditions of traditional standards. That the region can support such a variety of creative and capable artists ranging from traditional watercolorists to installation artists is a tribute to the Southern Alleghenies Museum of Art and the important role it plays in its multi-county community.

The peculiarities and traditions of the region are present, of course, but they are subverted by the vagaries of the juried exhibition process—including the rules regarding who can submit, when, what size, and of course, the personal inclinations of the juror, which are affected by the circumstances of viewing as well as by the nature of the overall pool of entries. I have attempted to select the strongest possible work without regard to style or subject matter, but I am not looking at individual works in isolation from one another. It is a comparative process, albeit complicated by the distillation of the images into pixels, which no doubt improves some works while detracting from others. Nevertheless, I am confident that the result is a demonstration of the creativity, craftsmanship, and vitality of some of the region's best artists.

Juried competitions provoke strong emotions in the participants. It is hard to say whether the exaltation of acceptance is more significant than the depression of rejection. I tried to select the strongest work and create the best exhibition. I'm sure that in the process, I disappointed a number of artists. To them I say, "It's just one man's opinion."

John Vanco
Director
Erie Art Museum

AWARD JUROR'S STATEMENT

While it is always difficult to select award-winning work from digital images, it is even more difficult to narrow down to the definitive award categories. I found the selections to be a good cross-section of media and subject matter and my choices highlight the variety of approaches.

Two paintings captured my attention for completely opposite reasons; *Winter Look*, for its spontaneity in the application of pigment and composition decision, while I connected completely to *Poppies + Heroines 75-8*, for its precision and methodical application of paint and diagrammatic design.

Trough, the sculpture I chose was intriguing, in a macabre sort of way. I love how it transforms itself from control and order to uncontrollable chaos. I can imagine how the piece activates your senses of smell and touch, and even subtly sound, as it swells up and moves in the space. It becomes a living and breathing form.

I found some very expressive drawing entries, and several caught my eye, but I finally settled on *Transformation #2* for its unique approach to the portrait and medium.

My craft choice, *Miss Fanny in Her Sunday Finest*, tends toward the tradition of basket weaving while utilizing it to produce a non-traditional, non-functional form.

There were many exceptional photographs, but I believe the one I chose, *The North Star Laundry*, reflects the artist's eye behind the camera lens, creating a rhythmic and textural composition.

I enjoyed seeing all the entries and wish there were more prizes to award, as there were many deserving works.

Barbara L. Jones
Curator
Westmoreland Museum of American Art

BIENNIAL MERIT AWARDS

Best of Show Scott A. Turri <i>Poppies + Heroines 75-8</i> , 2007	Merit Award for Drawing Philip Brulia <i>Transformation #2</i> , 2000	Merit Award for Photography David Hammaker <i>The North Star Laundry</i> , 2006
Merit Award for Crafts Ceres M. Rangos <i>Miss Fanny in Her Sunday Finest</i> , 2008	Merit Award for Painting William T. Perry <i>Winter Look</i> , 2007	Merit Award for Sculpture Emily Bowser <i>Trough</i> , 2008

Michael Allison (Hollidaysburg)
Element Series - Earth, 2008
Mixed media on paper, 22 1/2" x 15"

Element Series - Earth, 2008
Forton steel with wood base,
33 1/2" x 25" x 2", Ed. 1/10

Richard Bargdill (Ebensburg)
Wasteland, 2008
Mixed media, 96" x 36" x 60"

Emily Bowser (Johnstown)
Trough, 2008
Bread dough, wood, and fabric,
72" x 204" x 72"

Untitled, 2007
Fabric, polyfil, and paint, 132" x 66" x 54"

Nancy Brassington (Bellefonte)
Violence is American as Cherry Pie, 2007
Oil on canvas, 66" x 44"

Philip Brulia (Ebensburg)
All the Blue Changes, 2002
Colored pencil on Bainbridge matboard,
24 3/4" x 28 3/4"

Through the Portal, 1996
Colored pencil on Bainbridge matboard,
38" x 26 1/4"

Transformation #2, 2000
Colored pencil on Bainbridge matboard,
23 1/4" x 17"

Edward J. Burda (Portage)
Witness: Silent Embrace, 2008
Watercolor on paper, 29" x 21 3/4"

Kathleen Kase Burk (Ebensburg)
Fruits of the Season, 2007
Colored pencil on paper, 33" x 33"

Daniel Burke (Erie)
No Book Ends, 2008
Mixed media, 96" x 240" x 8"

Mary Cady (Reedsville)
Pennsylvania STYX, 2006
Wood and acrylic, 20" x 36"

Allen Capriotti (Altoona)
Mrs. Dionne Adams, 2006
Oil on linen, 48" x 36"

Purple Mountain Majesty, 2007
Oil on linen, 48" x 36"

Dorothy de Groat (Pittsburgh)
Windblown, 2008
C-print, 18" x 16"

Mike Demi (Reedsville)
Big and Round, 2007
Acrylic on wood, 20" x 24"

Warm Winter, 2006
Acrylic on wood, 18" x 36"

Ron Donouge (Pittsburgh)
Disabled Cornpicker, 2008
Oil on linen, 24" x 30"

Loretto, 2007-2008
Oil on panels, 33" x 42"

Norman Ed (Johnstown)
Balance, 2007
Wood, steel, paint, and glass
70" x 14" x 107"

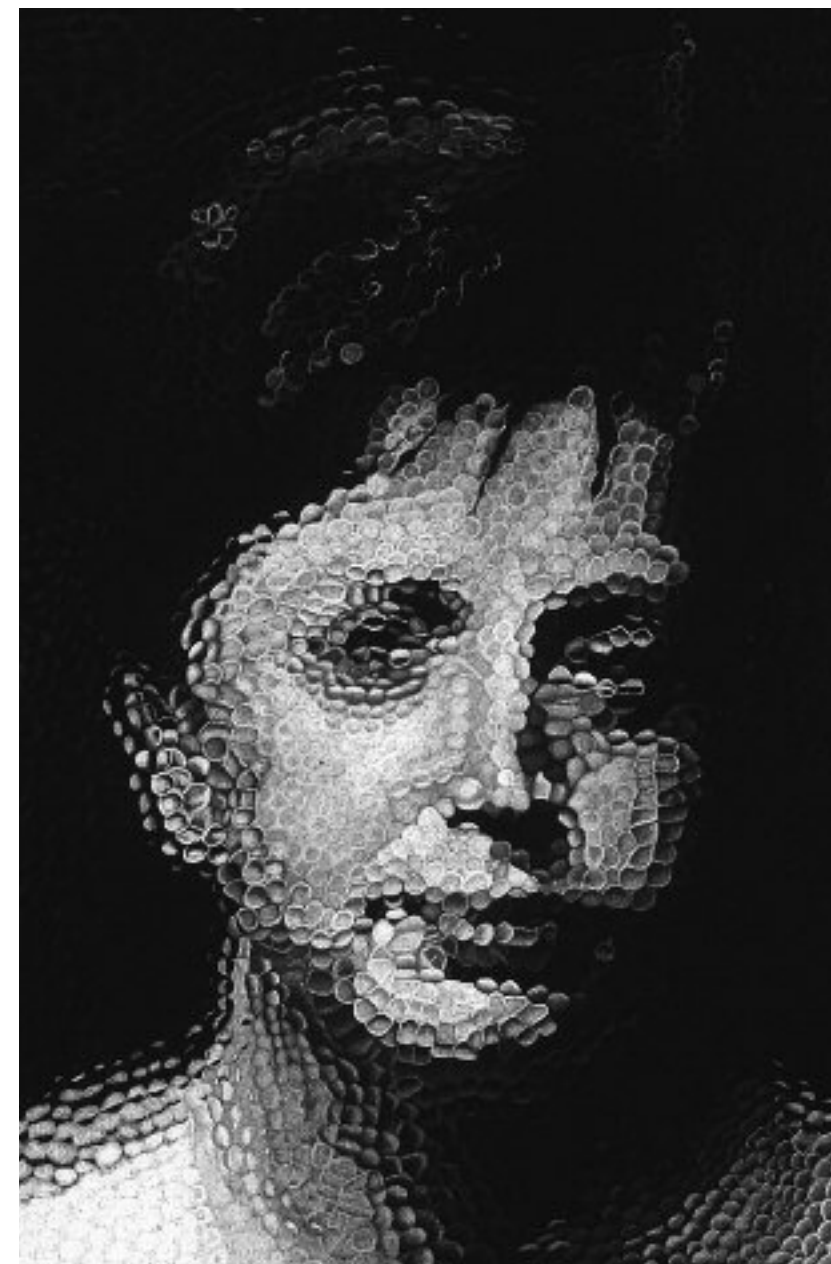
Wallbox (Puzzle), 2007
Wood, 34" x 7" x 12"

Betty Elias (Pittsburgh)
Route 66, 2007
Photograph, 24" x 18"

Urban Graffiti, 2008
Photograph, 18" x 24"

Brian Ferrell (Jeannette)
Cabled Coffee Table, 2007
Padauk, painted wood, and steel cable,
32" x 26" x 50"

Lounge Chair with Footstool, 2007
Maple, painted plywood, and artificial
leather, 32" x 26" x 50"



Philip Brulia, *Transformation #2*, 2000

Tea Service, 2006
Pewter, Morado, and Maple, 11" x 24" x 10"

Bonnie Brumbaugh Frijters (Huntingdon)
Misty May Morning in Galicia, Spain, 2007
Digital print, 10" x 13"

Marcene Glover (Johnstown)
Empowerment: Congressman Gregory Meeks, 2007
Watercolor and pastel on paper, 29" x 21"

The Spirit of History: Civil Rights Leader, Congressman John Lewis, 2007
Watercolor and pastel on paper, 21" x 29"

Carol Goldberg (Boalsburg)
Riding the Hong Kong Subway, 2007
Oil on canvas, 16" x 20"

Helen Gorsuch (Altoona)
Bufo in Five Languages, 2008
Clay, glazed, Raku-fired, 13 1/2" x 16" dia.

Wrestling the Carrot, 2008
Clay, glazed, Raku-fired, 16" x 12" x 18"

Charles Hall (Coburn)
Blue Bounce, 2007
Acrylic on plywood, 80" x 30" [diptych]

David Hammaker (East Freedom)
Beijing Cafe, 2008
Archival pigment print, 19" x 25"

The North Star Laundry, 2006
Archival pigment print, 19" x 25"

The Yellow Shade, 2006
Archival pigment print, 25" x 19"

Gaius "Doc" Hanawalt (Woodland)
Autumn Surprise, 2008
Cherry, Black Walnut, and dyed veneer,
8 1/2" x 4 1/2"

Baby Blues, 2008
Maple, Bloodwood, and turquoise,
8" x 6 1/2" dia.

Cocobolo Bowl, 2008
Cocobolo, 2" x 5" dia.

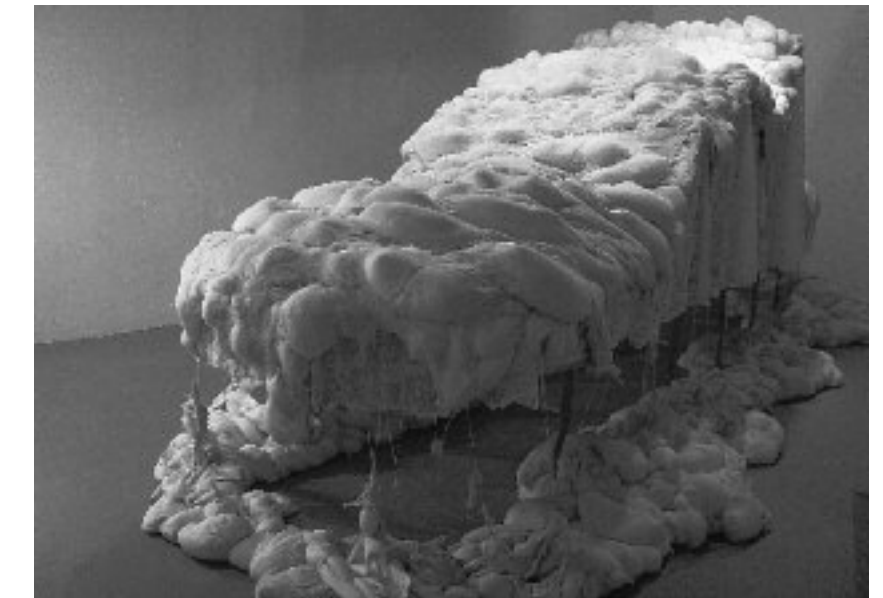
Adrienne Heinrich (Murrysville)
Archives Series: Italy, 2005
Silicone casting and mixed media,
12" x 12" x 1"

Billie Hollen (Altoona)
Where I Wanna Be, n.d.
Oil on canvas, 22" x 28"

Yvonne Kozlina (Pittsburgh)
Christina, 2008
Pastel on Canson paper, 18 1/2" x 26"

Purple Jade, 2008
Colored pencil on Canson paper, 12" x 8"

Sharon Lee (Port Matilda)
Big Gulp, 2008
Acrylic on hemp and organic cotton, 38" x 38"



Emily Bowser, *Trough*, 2008

Blah, Blah, Blah, 2008
Acrylic on hemp and organic cotton,
38" x 38"

JoAnne Lightner (Pittsburgh)
Saffron, 2008
Digital print, 15" x 10"

Judith Musser (Somerset)
Homage - Burchfield, 2008
Acrylic on canvas, 32" x 26"

Alison Newman (Export)
Present and Future, 2008
Acrylic on paper, 16" x 20"

Thomas J. Norulak (Pittsburgh)
Forest Fracture, 2008
Etching, 12" x 18"

Secret Steps, 2008
Etching, 12" x 18"

Bob Patterson (North Braddock)
Lava Rock, Maine Coast, 2007
Photograph, 18" x 24"

Path in Fall, 2007
Photograph, 18" x 24"

Reflections in Marsh, 2007
Photograph, 18" x 24"

William T. Perry (Harmony)
Cat Parts, 2007
Watercolor on paper, 29" x 36"

Winter Look, 2007
Watercolor on paper, 25" x 37"

Nathan Poglein (New Florence)
Circus (Vessel), 2007
Stainless steel, 14" x 10" x 10"

Converge, 2006
Stainless steel, 14" x 28" x 28"

Carol L. Randolph (Waynesburg)
Lily and Friend, 2007
Sumi ink on rice paper, 10" x 8"

Valley Falls, 2007
Oil on Masonite, 12" x 16"

Ceres M. Rangos (Pittsburgh)
Miss Fanny in Her Sunday Finest, 2008
Mixed media, 25" x 10" x 16"